

ARKANSAS SOUTH REGION ORCHESTRA

JUNIOR HIGH STRING AUDITION MATERIALS ~ SET II (2021)

There are two junior high performing groups at the South Region Orchestra Clinic. The top players in each section according to rank earn a seat in the Concert Orchestra, and the second highest group of players is invited to join the String Orchestra.

CONCERT ORCHESTRA: This first-tier group utilizes 16 Violin I, 16 Violin II, 10 Viola, 10 Cello, and Bases TBD, as well as a full complement of winds, brass, and percussion for a full symphonic orchestral experience. The difficulty of the music is typically what students might encounter in their third year of playing.

STRING ORCHESTRA: This second-tier group uses the same number of string players per section as the Concert Orchestra but is a string-only ensemble. The difficulty of the music is typically what students might encounter in their second year of playing.

****REMINDER:** Individual String applicants must be registered members of ASBOA BEFORE they will be permitted to participate in any ASBOA-sanctioned event. For more information on this, see the document titled "Information for Individual String Applicants," also located on the ASBOA website.

AUDITION MATERIAL: All printed fingerings and bowings are required. All instruments have the first two pieces listed in common. The third piece is a solo or orchestral excerpt specific for that instrument.

SET II (2018)

- 1) An Evening Song
- 2) Perpetual Motion
- 3) Violin: Mozart: Symphony No. 40 in G Minor – 1st Mvt.
Viola: Borodin: Polovetzian Dances
Cello/Bass: Berlioz: "March to the Scaffold" from *Symphonie Fantastique*

SCALES

Required scales are those with key signatures three sharps through three flats. All scales are to be played as detaché (smooth and connected) quarter notes at 80 beats per minute with the top note repeated, NO VIBRATO, and only in the octave(s) designated on the scale sheet. Only one major scale and one minor scale will be chosen from the following list:

- o Major Scales – TWO octaves: A, D, G, C, F, B \flat , E \flat
- o NATURAL Minor Scales – ONE octave: f \sharp , b, e, a, d, g, c

SIGHTREADING

All students will be required to sightread as part of their audition. Students will have 20 seconds to look over the sightreading material, during which they may not make any sound on their instruments. At the conclusion of the 20 seconds, the judge will ask the student to play the excerpt. Students are only allowed one attempt at the sightreading material.

For more information about audition procedures or the South Region Orchestra Clinic, please reference the appropriate documents posted on the South Region Orchestra website: conwayorchestras.weebly.com/south-region-orchestra.html

An Evening Song

Hohmann

Andante

$\text{♩} = 72$

Contrabass

The musical score for Contrabass is written in 3/4 time with an Andante tempo and a metronome marking of 72. The score is divided into four staves, each containing musical notation with dynamics, fingering, and articulation marks.

Staff 1 (Measures 1-9): Starts with a piano (*p*) dynamic. Dynamics progress to *cresc.* and then *f*. Fingering includes II, I, II, I, III, I. Articulation marks include accents and a breath mark (V).

Staff 2 (Measures 10-18): Starts with a *dim.* dynamic, then *p*, *cresc.*, and *f*. Fingering includes II, I, III, II, I, II, I. Articulation marks include accents and a breath mark (o).

Staff 3 (Measures 19-27): Fingering includes II, I, II, I, III, I. Articulation marks include accents and a breath mark (o).

Staff 4 (Measures 28-35): Starts with a *ff* dynamic, then *dim.*, and ends with *pp*. Fingering includes I, II, III, I.

Perpetual Motion

Hofmann

$\text{♩} = 80$ Allegretto
H.P.

Contrabass

mf sim.

5

9

2 1 4 1 1 2 1 4 1 4 1 1 2 1 4 2
II I III II I III I

March to the Scaffold

Berlioz

Cello

$\text{♩} = 72$

f *ff* dim.

6 *p* *mf* *f* dim.

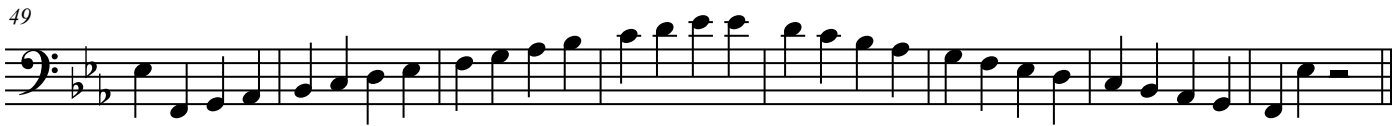
12 *p* *pp*

Bass Major Scales

South Region Orchestra

No vibrato, repeat top note, quarter note=80
Scales must be memorized.

Contrabass



Bass Natural Minor Scales

No vibrato, repeat top note, quarter note=80

South Region Orchestra

Scales must be memorized.

Scales should only be performed as printed; playing a different octave will result in a score deduction.

Contrabass



5



9



13



17



21



25

